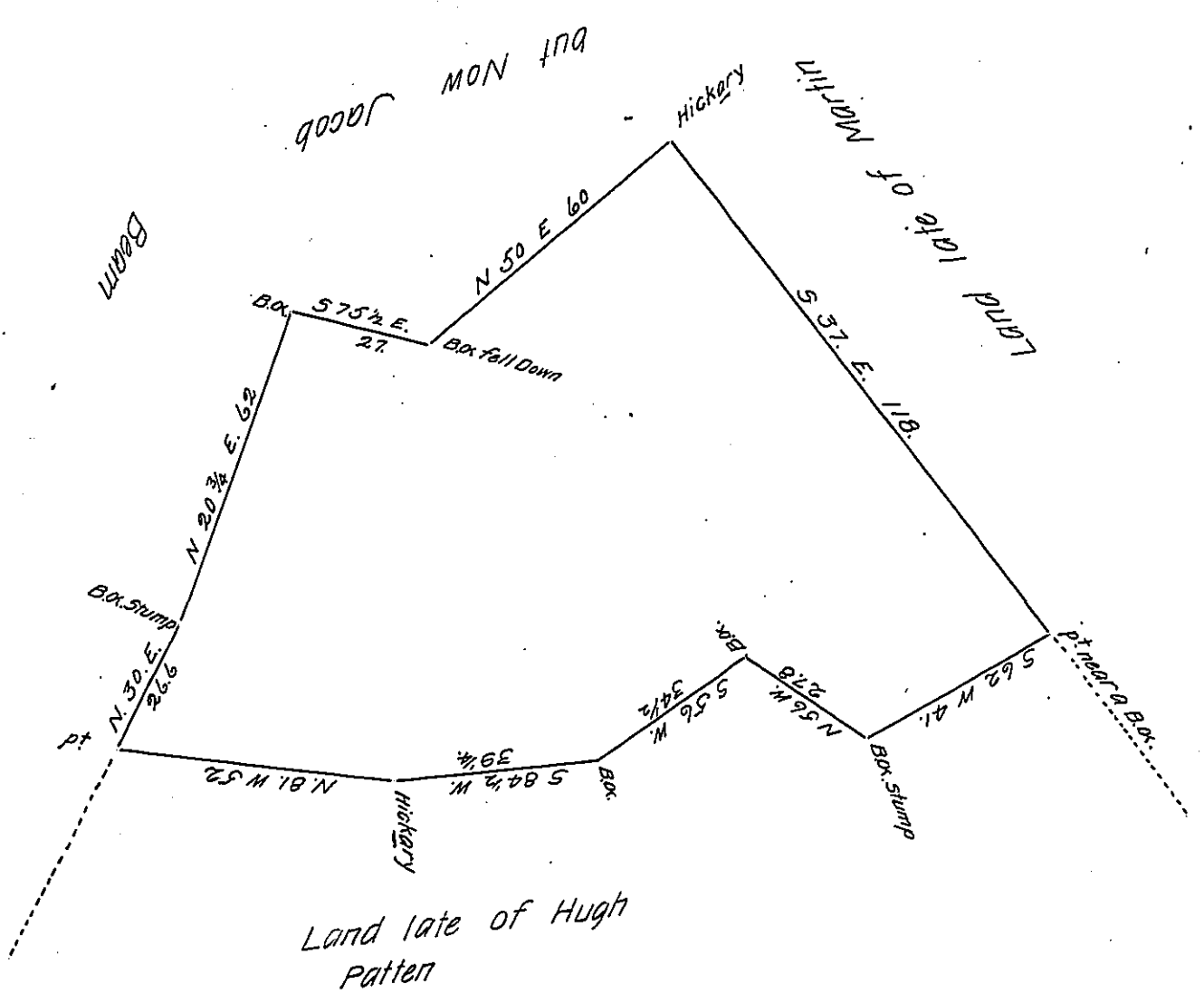


FORM No. 1.



A Draught of a Piece or Tract of Land Situate in Carrestogoe Township Lancaster County Containing 71^{rs} & 60^{ps} and the Usual Allowance of Six Per Cent for Roads &c Surveyed the 25th Day of April A.D. 1806 for Jacob Beam &c (It being Part of a Larger Tract of 171^{rs} & 91^{ps} and the Usual Allowance of Six Per Cent. Surveyed unto Hugh Patten By Virtue of a Warrant Dated the 12th Day of March A.D. 1752 &c)

P. H. Ream D.S.

& Saml Ensminger D.S.

To Samuel Cochran Esq.
Surveyor General

IN TESTIMONY that the above is a copy of the original remaining on file in the Department of Internal Affairs of Pennsylvania, made conformably to an Act of Assembly approved the 16th day of February, 1833, I have hereunto set my Hand and caused the Seal of said Department to be affixed at Harrisburg, this eleventh day of July 1906.

Isaac B. Brown
Secretary of Internal Affairs.